

ADRIATIC PILOT

Supplement No. 2

November 2009

5th Edition 2008

ISBN 978 085288 970 1

Caution

Every effort has been made to ensure the accuracy of this supplement. It contains selected information and thus is not definitive and does not include all known information on the subject in hand; this is particularly relevant to the plans, which should not be used for navigation. The author and Imray Laurie Norie and Wilson Ltd believe that its selection is a useful aid to prudent navigation, but the safety of a vessel depends ultimately on the judgement of the navigator, who should assess all information, published or unpublished, available to him.

This supplement contains amendments and corrections sent in by cruising yachtsmen and women. The updating of cruising guides is an ongoing process and the publisher is always glad to receive information, sketch charts or photographs for incorporation in future supplements or new editions.

Page references are made to *Adriatic Pilot* 5th Edition, 2008.

The last input of technical information was November 2009.

Amongst others, we are indebted to Captain Llambi Papa, Graham Adam and Ros Hogbin, of the RCC Foundation, and Keith and Jean Nicholson of the catamaran *La Liberte* for some of the following corrections.

Page 10 Wintering afloat

One factor you should consider when wintering afloat is that the Croatian authorities only allow visitors to stay in the country for a maximum of 90 days in any six-month period. With the correct paperwork yachts can be left unattended for longer periods.

Page 21 Durrës

The contact details for Vital Shipping Agency in Durrës are as follows:

☎/Fax 00 355 (0) 52 23 72 44

Email vital@albmail.com

msn vital_sh@hotmail.com

Skype llambi3

Mobile 00 355 69 20 63 544 (Captain Llambi Papa)

Mobile 00 355 69 20 78 417 (Captain Piro Traja)

Page 49 Zelenika

The customs berth at Zelenika is marked by the Montenegrin flag. The police and customs officials are located in the portacabin on the quayside, although the main customs office is outside the gate in a white building.

Page 50 Tivat

(additional information to Supplement 1)

Porto Montenegro

The marina has free wireless broadband, both single phase (16–26 amp, 230v) and three phase (63–600 amp, 400v) electricity, grey and black water discharge facilities, and can offer airport transfers. The marina can accommodate yachts of up to 100m. There is a dedicated telephone number for yacht assistance:

Yacht Assist Hotline: ☎ +382 (0) 32 67 23 53

Email yachtassist@portomontenegro.com

Page 52 Perast

Note that part of the quay has an underwater ledge.

Page 54 Kotor

Berth at the designated yacht quay, to the S of the walled town, rather than in the river. Anchoring in the 'harbour' area is no longer permitted. The only place, where anchoring is allowed, is approximately three miles N of the town, off a boatyard on the E side of the bay.

Officials When arriving/leaving Kotor tie up alongside the quay near the customs office to complete the formalities. The customs quay can be identified by the national flag.

Page 62 Cavtat

Anchor Depending on how busy the main bay at Cavtat is, it is possible to anchor in the S part of the bay where the harbour fees are half those of mooring at the quay. However, anchoring can be a bit fraught as the large yachts mooring stern to the quay drop their anchors out in the bay and can get rather close to those at anchor when leaving! There are currently no charges for anchoring in Uvala Tiha, on the NE side of the peninsula.

Officials The customs berth for entering/leaving Croatia is just north of the visitors' berths. It is marked by the national flag, and is 'fenced' off from the main quay. You cannot leave your vessel alongside the customs berth any longer than necessary. The customs officials at Cavtat want to see a crew list, rather than just the *vignette*, which seems to be the norm at other ports of departure.

Page 66 Gruž

Berth If wishing to clear customs at Gruž it is worth contacting the border police/customs on VHF Ch 9 in advance to ask for information on where to berth, as space can be at a premium.

Page 70 Slano

Next to the church there is a small archaeological museum, open in the afternoons between 1600 and 1900, which is worth visiting. It is also possible to visit a Roman villa being excavated in the town.

Page 73 Kobaš

Facilities There are now three restaurants here, each offering laid lines, water and electricity for customers.

Page 74 Uvala Lupeška

Shelter The only real shelter here is from N and NW.

Page 79 Šipanska Luka

Berth The quay S of the pier has laid lines.

Facilities Water and sometimes electricity are available from the harbourmaster.

Page 79–80 Suđurad

Berth Laid lines have been supplied on the quay inside the ferry berth, but as yet water and electricity are not available.

Anchor It is also possible to anchor in a cove SE of the ferry pier.

Facilities There is a well stocked local shop, two restaurants and two bars. The ferry service to Dubrovnik runs every hour. There is also a bus service from Suđurad across to the main village of Šipanska Luka.

Page 83 Trstenik

Berth The ferry has been discontinued.

Facilities Several bars and restaurants.

Page 86–87 Trpanj

Laid lines, water and electricity have been provided on the quay.

Page 100 Okuklje

The anchorage is now almost completely taken over by restaurant moorings. If however you do manage to anchor you will be charged a mooring fee.

Page 102 Otok Lastovo

Otok Lastovo and its surrounding islands have now been designated as a national park and there is a daily entry fee of 20 kuna per person.

Page 110 Plan of the Approach to the Pelješki Kanal from East

Note that the island immediately to the S of Otok Badija is not shown on Navionics charts (2009). This has been reported.

Page 166 Seget

A new marina, open throughout the year, has opened at Seget to the E of the small harbour. The marina has 100 berths on pontoons, and space to lay up 100 vessels ashore. Facilities include water and electricity to all berths, toilets, showers, café, playground, swimming pool, chandlers, provisions, ATM, a 40 ton-crane/travel hoist which can lift vessels of up to 9m beam (i.e. it caters for catamarans as well as mono-hulls). In the vicinity are a restaurant, supermarket, hotel, and bus service to Trogir.

Marina contact details are: Yacht Club Seget, Don Petra Spike 4, 21218 Seget Donji

☎ 021 880 791 Fax 021 880 790

Email reception@yachtclubseget.com

www.cromarina.com

Page 166–67 Marina (Marina Agana)

The marina can accommodate yachts of up to 25m in length on the water, and vessels of up to 20m length, 5.5m beam, 2.7m draught, and 40 tons ashore. The marina is now called Yachting Sport Agana

Email info@marina-agana.hr

www.marina-agana.hr

Page 184 Tribunj

Berth The public quay has laid lines, water and electricity.

Page 456 Plan of Brindisi

Delete anchor symbol on N side of inner harbour opposite the fuel berth. Note that anchoring here is no longer allowed.

Page 457 Brindisi

Anchor Delete this paragraph. Yachts are no longer allowed to anchor in this area, and are subject to a hefty fine if they do so.

Page 471 Useful web/internet pages

Information on weather:

www.meteo.hr This site gives clear forecasts in Croatian, English, German and Italian.

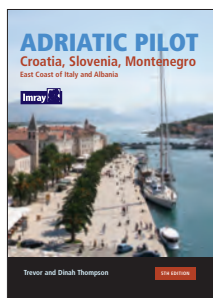
www.passageweather.com

www.windfinder.com

www.xcweather.co.uk

www.euroweather.net

www.grib.us



ADRIATIC PILOT Supplement No. 1

June 2009

5th Edition 2008

ISBN 978 085288 970 1

Caution

Every effort has been made to ensure the accuracy of this supplement. It contains selected information and thus is not definitive and does not include all known information on the subject in hand; this is particularly relevant to the plans, which should not be used for navigation. The author and Imray Laurie Norie and Wilson Ltd believe that its selection is a useful aid to prudent navigation, but the safety of a vessel depends ultimately on the judgement of the navigator, who should assess all information, published or unpublished, available to him.

This supplement contains amendments and corrections sent in by cruising yachtsmen and women. The updating of cruising guides is an ongoing process and the publisher is always glad to receive information, sketch charts or photographs for incorporation in future supplements or new editions.

Page references are made to *Adriatic Pilot* 5th Edition, 2008.

The last input of technical information was May 2009.

Page 2 Prohibited areas

There are no longer any prohibited areas in Montenegro.

Page 8 Pollution

Pumping out facilities are available at Marina Preko on Otok Ugljan (page 245–6).

Page 10 Sailing in the Adriatic

The Adriatic has become an increasingly popular destination for yachtsmen, and Croatia in particular becomes extremely busy during the main holiday months of July and August. During these busy periods it can be difficult finding a berth at a marina, or at one of the popular ports, unless you arrive in the morning or book in advance. This can mean missing out on the best sailing winds, which tend to pick up in the afternoons. Prices during July and August are much higher than at other times of year.

Many Croatian ports of entry and marinas (especially on the west coast of Istria) are easily accessible to the large power boats from Italy and therefore become even busier at weekends, with queues of vessels waiting to complete the entry/departure formalities.

The most popular areas are the west coast of Istria, and those harbours and islands on the flotilla circuit such as around Hvar, Trogir, Skradin and the Kornati islands. Viška Luka tends to be

overcrowded at the height of summer. Marinas, which are used as bases by the flotilla and charter yachts such as Trogir, usually have no room for visitors on changeover days and at the weekends.

Despite this it is still possible to find a quiet and secure anchorage for the night. You may even be the only yacht there. The majority of holidaymakers seem to want the convenience of a marina with its hot showers, and where they can step ashore for a restaurant meal.

Page 10 Wintering afloat

Marinas are the most popular options for wintering afloat or for laying the boat up over the winter. Berths or space ashore tend to be booked well in advance, so bear this in mind if you intend wintering or laying up in the Adriatic. The most popular marinas are those close to airports used by budget airlines. Contact details are given for all the marinas in the main text.

Page 14 Anchoring

Visitors' buoys have been laid in many designated anchorages, and a charge is made for using them. Out of season the buoys may be removed but the concrete sinkers are left on the sea bed. Beware of this if anchoring in one of these anchorages out of season. Whether using one of the buoys or not visitors are charged a mooring fee in these anchorages.

Page 16 Albania – Entry formalities

As from November 2008 visitors to Albania can stay for 90 days out of 180 days without a visa, and they no longer need to pay an entry or departure tax. For stays of over 90 days visitors must apply for a residence permit at the local police station.

Money

In April 2009 the exchange rate was 141leke to £1 Sterling, 128 leke to €1, and 95 leke to 1 US\$.

Travel advice

Travel advice from both the British and American governments has not changed since the 5th Edition of this pilot was compiled.

Page 17 Minefields

Delete this section in the second column.

Page 19 Gjiri i Sarandës

There are daily buses from Sarandë to Butrint.

Page 23 The Dalmatian coast

General

2nd paragraph: In July and August if you want to be sure of a berth at a marina you have to arrive during the morning or early afternoon. Alternatively book a berth in advance, although you may have to pay a surcharge for this facility. Prices increase dramatically during the main summer season, in public harbours as well as marinas. Marinas such as Trogir, where flotilla or charter yachts are based, often have no space for visitors on changeover days or at weekends.

Page 24 Entry formalities

Para. 2, line 9, Delete: 'Courtesy flags for Montenegro ... upside down!'

Montenegro's new flag, adopted at the time of independence, is illustrated on page 37 at the beginning of the chapter on Montenegro.

The sailing permits in Croatia and Montenegro are now referred to as a *vignette*.

Page 25 Plan of ports of entry

Vela Luka – should be in black (open all year)

Vis – should be blue (summer only)

Col. 1 Summer ports of entry**Montenegro**

Delete 'Most yachts will be approached and contacted by a naval patrol craft on entering Montenegrin waters.'

And replace with 'Budva is open during the summer as a port of entry. Note, however, that the officials are only available between 0700 and 1500. If you arrive outside of these times you must stay onboard at the customs quay until you have completed the entry formalities.'

Delete the following paragraph 'On arrival in a port of entry call *Bar Radio* ... the skipper is away.'

And replace with: 'On arrival in one of the ports of entry in Montenegro you should in the first instance report to the border police located on the customs quay (indicated by the Montenegrin national flag). The border police will inspect the passports and crew/passenger list before directing you to the harbour office. The harbourmaster will want to inspect the ship's registration documents, skipper's certificate of competence, and insurance certificates in particular, but you should also have all the other paperwork with you including passports, crew/passenger list, and list of ship's equipment. The harbourmaster will give you a form detailing the cost of the *vignette* (sailing permit), which you take to the Post Office or bank to pay. After showing the receipt to the harbourmaster he will issue you with the *vignette*. This can be valid for seven days, one month, three months, six months or one year. Finally you return to the border police with the *vignette* and the crew/passenger list. Once the crew/passenger list has been endorsed you are free to sail within Montenegrin waters.'

Page 26

4th paragraph, Delete: 'In Montenegro it is essential to declare all hard currency on arrival as it could otherwise be confiscated on departure.'

Change to read: 'On arrival in Montenegro it is essential to declare hard currency over the value of €2,000 and to obtain a form of declaration from Customs. This form has to be presented on departure. Currency over €1,000 may not be exported without this form of declaration.'

5th paragraph, Delete: 'In Montenegro a change of captain, or a change of more than two passengers or

crew means that a new sailing permit must be obtained.'

Replace with: 'In Montenegro a change of captain means that a new sailing permit must be obtained. However, the captain can change the names on his passenger list up to four times before getting a new permit.'

2nd column, 3rd paragraph, line 3, after: '... during that period.' Add 'From 2009 the Montenegrin sailing permit or *vignette* can be issued for periods varying from one week to a year.'

Page 27 Prohibited areas

2nd column, 1st paragraph, lines 8–10.

Delete 'Prohibited areas in Montenegro tend to be military installations, and so it is wise to avoid them.'

2nd column, 2nd paragraph, Delete: 'In Montenegro ... seven languages.'

Replace with: 'There are no longer any prohibited areas in Montenegro, although berthing at military quays is not allowed. Note, however, that the authorities can still be rather sensitive. For instance, we were recently refused permission to photograph the customs quay at Zelenika although it is purely a civilian facility.'

Page 28 Charts

Add: 'Electronic charts are now available for the Adriatic from various suppliers, and we have used them successfully on our recent trips to the area.'

Weather forecasts

Add:

Adriatic Sea areas are as follows:

Southern Adriatic 40°N to 42°N

Central Adriatic from 42°N to 44°N

Northern Adriatic from 44°N northwards

Page 29 Marinas

2nd column, 1st sentence change to read: 'Pumping our facilities for yacht holding tanks are still rare, but they are starting to be made available at the latest marinas such as Marina Preko on Otok Ugljan.'

Page 31 Money

3rd paragraph, line 4 Delete ', although American Express cards still cannot be used anywhere in the country.'

5th paragraph, line 9, Delete: 'It is essential to declare all hard currency on arrival in Montenegro, as it may otherwise be confiscated on departure.'

Replace with:

'Currency over the value of €2,000 must be declared at Customs on arrival in Montenegro. The form of declaration obtained from Customs must then be presented on departure from the country. Currency over €1,000 may not be exported without this form of declaration.'

6th paragraph, line 5, after 'Croatia' Insert: ', Montenegro,'

Page 32 Public holidays

Add:

May 21 Independence Day (Montenegro)

November 29–30 Republic Day (Montenegro)

Page 34 Medical treatment

3rd paragraph, Line 3, Delete: 'In the UK applications now should be made on a form available from the Post Office, online at www.dh.gov.uk/travellers'

Replace with

'In the UK applications for the EHIC can now only be made online at www.ehic.org.uk or by phone ☎ 0845 606 2030.'

3rd paragraph, line 11, after '... Department of Health.'

Add:

'Note that the EHIC has an expiry date, and you should check that it is still valid before travelling. New cards will be valid for five years.'

Communications and transport

At the end of the 2nd paragraph, Add:

'Budget airlines currently fly to Dubrovnik, Split, Zadar, Rijeka, Pula and Trieste (in Italy).'

Communications and transport

Col. 2, paragraph 3, add 'There is currently a programme of road building and road improvements in both Croatia and Montenegro. A new highway serving the Croatian coast is being built and in May 2009 had extended as far south as Ploče. Roads serving the coastal region in Montenegro are being upgraded, but still leave a lot to be desired. The top speed limit in Montenegro is 80kmph, but in places the limit is down to 20kmph, which is indicative of the difficult road conditions. Note that the police strictly enforce the speed limits.'

Page 35 International telephone calls

At end of 1st paragraph add: 'In Montenegro many public telephone kiosks are obviously no longer maintained. It is therefore better to make telephone calls at the Post Office.'

Change the final sentence to read as follows:

'In Montenegro the mobile networks are operated by T-Com (www.t-mobile.me), Promonte (www.promonte.com) and M:Tel (www.mtel.me).'

Important telephone numbers

For Croatia add, Highway assistance ☎ 987.

National number for help at sea ☎ 9155 (search and rescue service based in Rijeka). VHF 10, 16, 74.

Harbourmasters' offices in Croatia:

Dubrovnik ☎ (020) 418 989 / 418 987

Ploče (Kardeljevo) ☎ (020) 679 008

Split ☎ (021) 362 436 / 355 488

Šibenik ☎ (022) 217 214 / 16

Zadar ☎ (023) 254 888 / 80

Senj ☎ (053) 881 301

Rijeka ☎ (051) 214 031 / 214 474

Pula ☎ (052) 222 867.

Mail

At end, Add 'Wireless Internet Connection is also available at most marinas.'

Page 37 Montenegro**Harbour checklist**

Ulcinj Under Fuel add B

Bar Under Fuel delete 'B' and replace with 'A'.

Sv. Stefan Under Provisions add C

Bigova Under Water add B

Tivat 'Under Harbour/Anchorage delete 'Q' and insert 'M'; under Shelter delete 'C' and replace with 'A'; under Fuel delete 'B' and replace with 'A'; under Water insert 'A'.

Risan Under Shelter replace A with B, Water –

Perast Under Water add B

Kotor 'Under Fuel delete 'B' and replace with 'A'

Muo Under Water A, under Provisions C

Prčanj Under Harbour/Anchorage add M, Shelter B, Water A, Provisions C.

Page 38 Prohibited areas

Delete the whole section and replace with the following:

'As from 2009 yachts can sail wherever they wish in Montenegrin waters. The only restrictions apply to military quays, where yachts are not allowed to berth. Despite the relaxations the authorities can still be sensitive. It is therefore advisable to be cautious about taking photographs.'

Page 39 Ulcinj**General**

There are plans to create a marina at Ulcinj, and work is due to start sometime in 2009.

Facilities

Add 'ATM'

There is an extensive range of shops in the new town, including several supermarkets. Several quality restaurants in the old walled town above the harbour. Internet café, theatre and art gallery.

Plan

Delete 'Ferry' and ferry symbol at the quay.

Page 40 Bar**General**

Bar has two marinas. The marina operated by the municipality of Bar, AD Marina Bar, is located in the yacht harbour to the N of the commercial port. The privately owned Marina Sv. Nikola is located within the NE part of the commercial port.

Approach

Amend second paragraph to: 'AD Marina Bar, located to the N of the commercial port, has its own entrance and is entered from N. The ends of the breakwaters, marked by lights, have ballasting extending from the ends. Marina Sv. Nikola is in the NE part of the commercial port, beyond the naval vessels and ferry berth. When entering take care to keep out of the way of commercial traffic.'

Page 41 Bar

Berth

Delete: 'It is possible to berth at one of the concrete pontoons in the marina' and replace with: 'After clearing customs berth at one of the marinas.'

Officials

Border police and customs are in the large blue building at the ferry terminal. The harbourmaster's office is located in a modern building across the park to the E of AD Marina Bar.

Facilities

Both marinas have water, electricity, toilets and showers. AD Marina Bar offers internet access.

Delete: 'Water is laid on ... fuel shed.'

Add: 'There is a fuel berth within the yacht harbour, on the S side of the E breakwater. Depths at the fuel berth are about 2m.'

Line 5, Delete 'Petrol and diesel ... S out of the town.'

Line 7, after '... filling station' Add: 'on the main road leading S out of the town.'

Line 10, after 'Bank' Add: 'ATM'

Lines 13–15, Delete '... in the port are intended for ships, but it may be possible to obtain help with any serious problems. The harbourmaster will be able to offer advice.'

Replace with:

'are available at the marina. All types of repair are possible, and there are a 260-ton travel lift and a 50 ton crane. Large warehouses at the port provide undercover storage for yachts during the winter months. The company operating the undercover storage and comprehensive repair facilities is OMC Marina Sv. Nikola.'

Add:

'There are two companies operating in Bar. Their contact details are: Marina Bar. Obala 13, Jula bb, 85000 Bar, Montenegro. ☎ (069) 84 17 06.

Email marina@bar-marina.ru www.bar-marina.com

OMC Marina Sv. Nikola, Port of Bar.

☎ (085) 313 911. *Email* omc@cg.yu

www.omcmarina.com

Page 43 Petrovac na Moru

Facilities

Several shops including supermarkets, bakers and pharmacy. ATM outside the post office. Police. Taxis.

Page 44 Sveti Stefan

General

Add: 'The island hotel is currently closed whilst it is being refurbished, and there is no indication yet when it will reopen.'

Plan

On the N side of the causeway to the island there is a roped off area with small craft moorings. There are also some moorings in the bay S of the causeway.

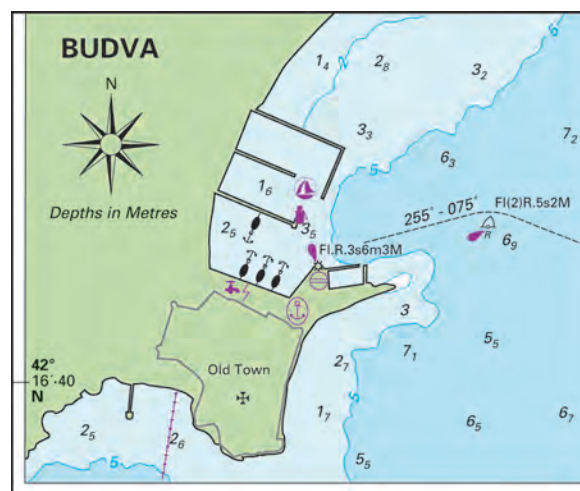
Anchor

Anchor to the E of the island and S of the causeway in 6–9m, avoiding the moorings and bathing platform.

Facilities

Delete the current entry and replace with: 'There is a water tap at the mid point on the N side of the causeway. Well stocked mini-market in the village, several restaurants, hotel, tourist information, and frequent bus service to Budva.'

Page 45 Budva



Page 46 Budva

Approach

Delete: 'When the R buoy bears ... 015°.'

Replace with:

'There is a pair of light buoys (Fl.R.2s2M and Fl.G.2s2M) between the old town and the NW end of Otok Sv. Nikola. Pass between these buoys and steer 016° for the G light buoy (Fl.G.3s2M). Once this buoy has been left to starboard change course onto 291° and pass to the N of the R light buoy (Fl(2)R.5s2M) off the end of the harbour mole. From here, steer towards the light on the quay.'

Lights

Delete: 'Leading Dir. Lt'

Change: 'Budva entrance buoy Fl.R.2s' to 'See Approach above for details of buoys'

Berth

If wishing to clear customs tie up alongside the customs quay near the light. Space on the main quay is mostly taken up by large power yachts, even out of season. The best option therefore is to berth at the marina (VHF Ch 16 or 08) where directed or where space permits. Berths on the quay and at the marina have laid lines.

The marina address is: Marina Budva, Mediteranska 4, 85310 Budva, Montenegro. ☎ (067) 447 161 or (067) 503 387.

Email marinabudva@cg.yu

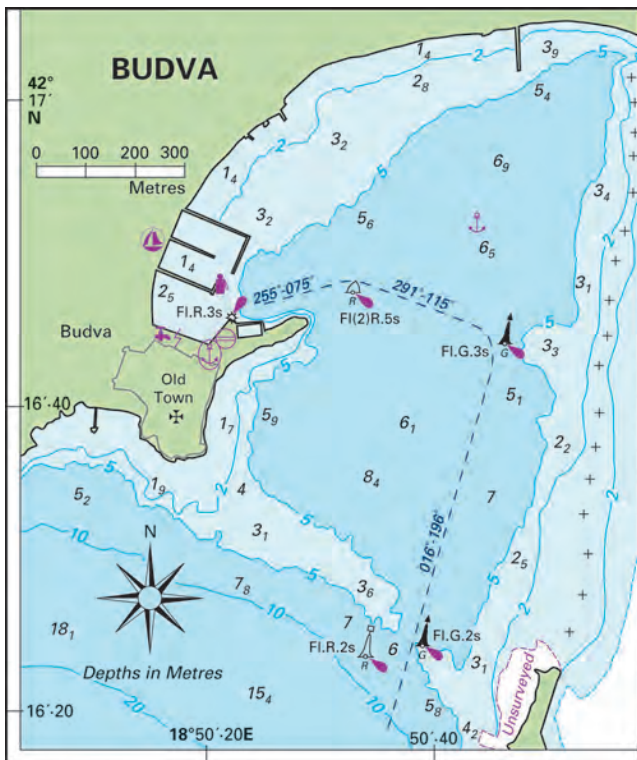
Officials

Summer port of entry. The customs berth is at the end of the quay near the harbour light (indicated by the Montenegrin national flag). It is officially open between 0700 and 1500, but has a reputation for not actually sticking to these times! If the office is closed you must stay onboard until you have completed the entry formalities.

Facilities

Add

'Facilities at the marina include water, electricity, fuel (from the end of the pontoon just N of the main quay), toilets, laundry, wireless internet access, and a crane. Well-stocked chandlers on the quay near the marina office and customs berth. Internet café in the town.'



Page 50 Uvala Krtole and Uvala Polje

Anchor

Anchoring to the E of an imaginary line passing N-S through the gap between the islands of Stradioti and Prevlaka is now no longer allowed. There is an extensive fish farm in Uvala Krtole.

Tivat

General

The first stage of Porto Montenegro will be open in the summer of 2009. Initially the berths will be protected by a floating breakwater to the W. Porto Montenegro will cater for smaller yachts as well as mega yachts and will have over 600 berths. The marina will have the full range of services that you would expect in a modern marina, including a fuel berth at the entrance. Repair facilities will be available at the former shipyard in Bijela. Porto Montenegro can be contacted by

Email info@portomontenegro.com.

☎ (032) 674 660 *Fax* (032) 674 656.

www.portomontenegro.com

Approach

The first phase of the new marina is entered from N. There are no dangers in the immediate approach. The public quay lies to the S of the new marina. There is also a crowded marina, Marina Kalimanj, on the SE side of the town just N of the R and W light structure at Rt Kaliman.

Berth

Berth at the marina as directed, or space permitting, secure alongside the public quay. There is unlikely to be space for visitors at Marina Kalimanj.

Shelter

The marina will provide all round shelter.



Facilities

The marina will have water, electricity and a fuel berth, toilets and showers. Excellent range of shops. Banks, ATMs. Repair facilities will be provided for super yachts at the shipyard on the N coast of the Tivatski Zaliv at Bijela.

Page 51 Risan

Plan

Delete symbols of yachts tied up alongside the pier/mole – this is now a restricted area. Also delete the symbols for taps. The pier and area to the E should be marked ‘Restricted area – commercial customs quay’

General

There is a commercial customs quay at Risan, with police, customs, and harbourmaster’s office, which means that yachts can no longer moor alongside the mole.

Berth

Tie up alongside the quay near the road, avoiding the shallow patch. The best berth is between the two sets of steps. Note that there is an underwater ledge along this quay, protruding about eight inches (20cm).’

Page 52 Risan

Facilities

No water. Add Post Office with ATM, bank, bakers.

Perast

Shelter

The quay is also exposed to the wash from passing cruise liners.

Facilities

Add: ‘Water from a tap near the shop, one block E of the church on the quayside. Two mini-markets selling essentials.’

Page 53 Plan of Kotor

Insert symbol for fuel on N side of river, N of symbol for harbourmaster.

Page 54 Kotor

Facilities

Line 2, Delete: ‘Fuel from a filling station ... outskirts of town.’

Replace with:

‘Fuel berth on the river E of the light on Kotor quay.’

Page 55 Muo

Facilities

Add: ‘Water and electricity on the quay. Small shop nearby.’

Prčanj

General

A small marina has been established at Prčanj with space for about 40 yachts, although on our latest visit the entire length of the outside quay was occupied by a super yacht.

Berth

Space permitting berth at the marina. Laid lines have been provided.

Facilities

Water and electricity at the marina.

Page 62 Cavtat and Uvala Tiha

Berth

During July and August Cavtat quay is monopolised by super yachts and it can be impossible for more modest craft to berth here. Laid lines have not been provided at Cavtat. Two new pontoons with laid lines, water and electricity, have been built in the SW corner of Uvala Tiha. If there is space, moor here, alternatively anchor in an appropriate depth out in the bay.

Page 63 Cavtat

Facilities

Add:

'Water and electricity are available on the quay, but you may need a long extension cable. Water and electricity on the quays and at the pontoon berths in Uvala Tiha. Internet.'

Page 67 Gruz

Facilities

There is a highly recommended internet café (open from 0800 to 2400) near the bus station at Put republike 7 (www.dunet.hr/engleski).

Page 69 Dubrovnik Marina

Facilities

The marina has wireless internet access.

Correct the marina *Fax* number to (020) 451 922

Page 73 Stonski Kanal

The light beacons in the Stonski Kanal are Fl.R.2s and Fl.G.2s.

Page 74 Ston

Anchor

Anchoring at the top of the channel is no longer permitted.

Delete anchor symbol from plan of Ston.

Page 84 Orebić

Facilities

Add:

'Diving centres and bicycle hire.'

Page 97 Luka Polače

General

The Mljet National Park entry fee includes the cost of the bus to the salt lakes as well as the trip on the boat out to the monastery. Once paid the fee is also valid at Pomena, for the duration of your visit. It does not need to be paid on a daily basis. The fees in 2009 are 90 kuna per adult, and 40 kuna for pensioners, students, and children over the age of six.

Approach

Approaching from N or W, the rock just below the surface 1½ cables NE of O. Maslinovac (the island at the entrance to Uvala Stupa) is marked by an unlit isolated danger mark.

Plan of Luka Polače

The rocky patch to the NE of the castle ruin has a minimum depth of 7m, not 2m as shown on the plan.

Page 98 Luka Polače

Facilities

The restaurant quays have laid lines and electricity available to their patrons.

Page 100 Okuklje

Anchor

The number of moorings and laid lines for the restaurants can make it difficult finding a suitable place to anchor here.

Page 101 Pomena

Approach

Approaching from E, the rock just below the surface 1½ cables NE of O. Maslinovac (the island at the entrance to Uvala Stupa) is marked by an unlit isolated danger mark.

Page 104 Luka Velji Lago

Berth

The maximum depth at the Marina Solitudo is 2m.

Page 108 Korčula Marina

Facilities

Marina staff will organise the refilling of gas bottles. The marina has wireless internet access. The internet café outside the marina near the bus station is recommended.

Page 110 Otok Vrnik

It has been reported that anchoring in the bay on the SW side of the island attracts a negative response from the occupier of the house overlooking the bay. He shouts at you until you leave.

Page 118 Vela Luka

Berth

No laid lines on the quay (2008).

Page 124 Viška Luka

Anchor

Yachts anchoring anywhere within the harbour area are charged. In 2008 the charge for yachts up to 10m was 50 kuna, and for yachts over 10m the charge was 70 kuna.

Page 125 Komiža

Delete *Email* nautick.centar.komiza@st.htnet.hr

Add ☎ (021) 713 849.

Page 132 Luka Palmižana

The marina is open from April until the end of October. It has wireless internet access.

Page 140 Vrboska

Facilities

The marina has wireless internet access.

Page 148 Harbour checklist

Tribunj

Fuel berth at Tribunj (insert 'A' under Fuel).

Otok Brač – Sumartin

Fuel berth at Sumartin (insert 'A' under Fuel).

Page 151 Baška Voda

General

Lines 3–8, Delete: ‘The facilities ... shore lines’

Replace with:

‘The harbour has been improved and now has 250 yacht berths, including 60 for visitors.’

Berth

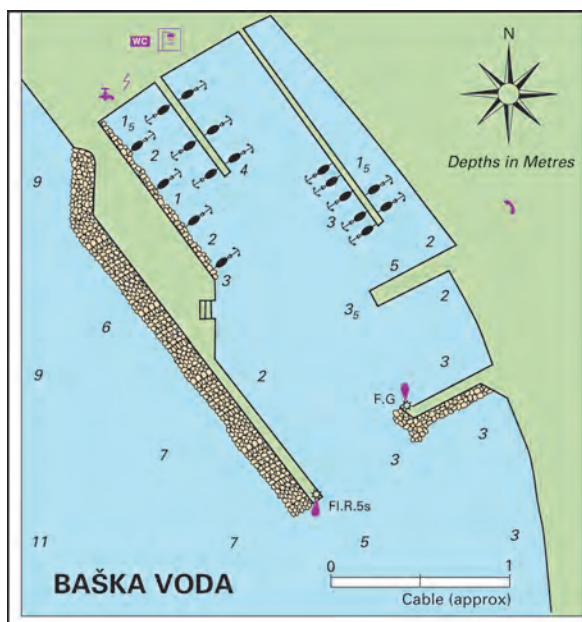
Delete the current entry and replace with:

‘Berth as directed and wherever space permits. Berths have laid lines.’

Facilities

Water and electricity to all berths. Toilets and showers. Laundry in the town. The marina address is Marina Baška Voda, Obala Sv. Nikole 3, 21320 Baška Voda. ☎ (021) 620 909 Fax (021) 620 907 Email baskavoda@baotic-yachting.com www.baotic-yachting.com

Plan of Baška Voda



Page 152 Baška Voda

Anchor

Delete this section. It is no longer possible to anchor inside the harbour.

Facilities

Add: ‘Toilets are available.’

Page 154 Kairos

The marina attached to the luxurious Hotel Lav has been renovated and now has 80 berths with laid lines for yachts of up to 40m in length.

Facilities

Water, electricity, toilets and showers, an internet café, and access to the hotel’s facilities such as the restaurant, bar, swimming pool and spa. The marina is entered from NW, and the entrance is marked by a Fl.G. light.

The marina can be contacted by phone

☎ (021) 500 388 Fax (021) 500 387

Email info@marinalav.hr www.grandhotellav.com

Page 155 Pomorska Sportsko Društvo Zenta

General

This large club marina has a total of 700 berths, 70 of which are available for the use of visitors.

Page 156 Split

The ACI marina in Split is adjacent to two yacht club marinas, Mornar Sailing Club to the W, and Labud in the middle. Sometimes it may be possible to berth at Labud if a member is away, but yachtsmen trying to do this felt that the club was under pressure from ACI to turn them away.

Facilities

The ACI marina has wireless internet access. The marina has a 35-ton travel hoist.

Page 159 Marina Kaštela

Facilities

The marina has wireless internet access.

Page 165 Trogir

General

It is not possible to berth on the town quay on Friday nights because it is used by local hotel boats receiving new guests – even in May. The fees for berthing at the town quay are also considered to be high.

Facilities

The marina has wireless internet access.

Page 167 Marina Agana

Berth

Marina berths have laid lines.

Facilities

Marina facilities include a chandler, and a workshop.

The marina’s Email address is

agana.marina@st.t-com.hr

Page 167 Uvala Vinišće

The marina here (Marina Mirna-Vala) now has three pontoons with space for up to 40 yachts, and facilities now include toilets and showers. It is used as a base by a charter company.

Page 170 Rogoznica – Marina Frapa

Berth

In 2008 a new transit pier was constructed at the marina, extending out E from the ‘island’ in the NW corner of the bay. Berth at this pier as directed.

Facilities

The Marina has an internet area, and wireless internet access.

The marina website is www.marinafrapa.hr

Page 171 Marina Kremik

General

The wine produced in the area is Babić, a famous red wine.

The marina is used by several charter and flotilla companies.

Page 172 Marina Kremik

Note: The pontoons have been rearranged and there is a light on the pontoon on the W side of the marina nearest the entrance.

Facilities

The marina has an internet area and wireless internet access.

The marina *Email* address is
info@marina-kremik.hr www.marina-kremik.hr

Page 174 Marina Solaris

The marina address is Solaris Yacht Marina, 22000 Šibenik, Hotelsko naselje Solaris bb.

☎ (022) 364 440 or (022) 364 000

Fax (022) 364 440 or (022) 361 800

Email marina.info@solaris.hr www.solaris.hr

Page 176 Kanal Sv. Ante

Line 3 on 1st column, Delete 'Access to the larger, Uvala Sv. Petar, is prohibited.'

Replace with:

'Marina Mandalina, which can accommodate mega yachts, is located in Uvala Sv. Petar, the larger inlet.'

Page 184 Tribunj**Facilities**

Fuel is available at the marina (accessed through the fishing harbour, near the boat hoist quay).

Amend marina *Email* as follows:
marina-reception@marina-tribunj.hr

Add website: www.marina-tribunj.com

Page 190 Sumartin – plan

Insert symbol for fuel on the quay shown in NW bay (SW of the 8m sounding).

Page 191 Sumartin**Facilities**

The fuel berth in the NW part of the inlet has depths of 3m alongside. It is open daily between 0700 and 1900. There is an ATM here.

Page 246 Preko**Berth**

The marina can accommodate yachts of up to 20m inside the harbour, and can take super yachts of up to 60m alongside the outer wall.

Facilities

The marina has laundry facilities and wireless internet access.

Contact details: Marina Preko, Vrulja 2, 23273 Preko, Otok Ugljan – Zadar ☎ (023) 286 230.

VHF 17. *Email* info@marinapreko.com.

A guaranteed overnight berth can be arranged by phoning ☎ (023) 286 433, and giving credit card details. This incurs a 30% supplement on the daily berthing fee in July and August, and 15% in May, June and September. In 2009 the daily rate for a 10m yacht is €44.

Page 250 Uvala Sutomišćica and**Olive Island Marina****Facilities**

Olive Island Marina is now fully operational. The swimming pool however, is not a full size adult pool, but is for small children. The marina has wireless internet access. 30-ton travel lift, but no crane. Chandlers.

Page 252 Iž Veli**Facilities**

The marina does not have any laundry facilities.

Page 264 Otok Piškera – Marina Piškera

The marina is open from April until the end of October.

Page 268 Veli Rat Marina

The marina is now fully operational and is open throughout the year. The marina address is Marina Nautica Veli Rat, 23287 Veli Rat. ☎ (091) 280 034.

Page 275 Uvala Triluke (Zaglav)**Facilities**

The fuel berth is open between 0700 and 2100 during the summer season, and 0700 and 1800 out of season.

Page 284 Luka Silba**General**

Visitors' buoys have been laid off the harbour.

Page 290 Šimuni**Facilities**

The marina has wireless internet access.

Page 290 Novalja**Facilities**

Out of season the fuel berth is only open between 0900 and 1200.

Page 293 Rab**Facilities**

The marina is open from April until the end of October. It has wireless internet access.

Page 295 Supetarska Draga**General**

The marina is open throughout the year.

Facilities

The marina has wireless internet access.

Page 311 Opatija**Facilities**

The ACI Marina Opatija has wireless internet access.

Marina Admiral's address is Hotel Admiral, Maršala Tita 139, 51410 Opatija.

☎/Fax (051) 271 882 *Email* and website as shown.

Page 317 Pomer**Shelter**

The berths at Pomer Marina are exposed to strong E winds.

Page 320

Delete contact details and website for Marina Porto Volme.

Page 321 Veruda

Facilities – at the marina

The marina has an internet area. 10 and 30-ton cranes.

The marina contact numbers are: ☎ (052) 224 034 and (052) 385 385 *Fax* (052) 211 194.

Page 322 Luka Pula – Plan

The shoal area E of O. Uljanik, and W of the marina is now marked by a N cardinal buoy, and unlit E, S and W beacons.

Page 323 Approach

Line 2, Delete ‘4 unlit black buoys with cardinal top marks’

Replace with:

‘a N cardinal buoy, and unlit E, S and W beacons.’

Page 323 Facilities

The marina has wireless internet access.

Page 326 Rovinj

Facilities

The marina has wireless internet access.

Page 327 Vrsar

Berth

The marina can accommodate yachts of up to 50m in length.

Page 328 Vrsar

Facilities

The marina has wireless internet access.

Page 330 Poreč

Facilities

The marina has a launderette, and digital satellite TV connection to all berths. The marina

☎/*Fax* number is (052) 451 913.

Page 332 Novigrad Marina

Approach

Delete: ‘(in October 2007)’

Facilities

The marina has an internet area, and wireless internet access. All berths have internet links.

Page 335 Umag

Facilities

The marina has water and electricity to all berths, restaurant, and wireless internet access.

Page 337 Krk

Approach

Note that it is dangerous to approach Krk harbour in strong S winds, when the harbour is untenable.

Berth

Extra berths with stern buoys have been provided on the N side of the S breakwater, and also on a pontoon near the root of the breakwater. Visitors’ moorings have also been laid in the bay to the E of the harbour.

Page 344 Punat

Approach

On entering keep closer to the port hand beacons, and do not turn to starboard until 70m beyond the

last starboard mark. Note that in strong winds from SW there can be a strong current of up to two knots in the entrance channel.

Facilities – marina

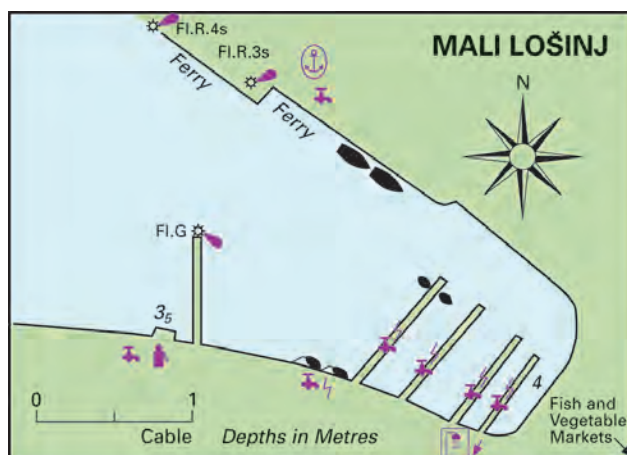
The marina has wireless internet access, and a laundry.

Page 348 Cres

Facilities – marina

The marina has wireless internet access. Car, bicycle and motorbike hire are available at the marina.

Page 353 Mali Lošinj Plan



Page 354 Mali Lošinj

Berth

1. Another pontoon, with a FI.G. light on its end, has been put into the main harbour to the W of the four pontoons shown on the plan, to give added protection and mooring space. These moorings are administered by YC Marina.

3. Marina Mali Lošinj has berths on either side of the swing bridge at Privlaka, and can accommodate 78 yachts of up to 20m. It also has 10 berths for larger yachts.

Officials

The weather forecast is available at the marina and also at the YC Marina office on the main town quay.

Facilities

There are new toilets close to the pontoons in the main part of the town harbour.

Depths at the fuel berths are 7m (town quay) and 8.5m (near the marina at Privlaka). The marina has laundry facilities, and a mini-market.

Marina contact details: Marina Lošinj, Privlaka bb, 51550 Mali Lošinj. ☎ (051) 618 613.

Email marinalosinj@t-c.hr. www.marinalosinj.com

YC Marina Mali Lošinj, Priko 28, 51550 Mali Lošinj. ☎/*Fax* (051) 231 005 and (051) 231461.

Email info@ycmarina.hr



Page 363 Marina Portorož

Berth

The maximum length of yacht that can be accommodated in the marina is 22m, and maximum draft is 3.5m.

Page 367 Izola

Facilities – marina

The marina has a coin operated launderette.

Marina ☎ (05) 66 25 400 Fax (05) 66 25 406.

Yachting Centre Izola address: Cankarjev drevored 23, 6310 Izola. ☎ (05) 663 09 90/94 Fax (05) 663 09 92 Email info@yachtcenter.si

Page 368 Koper

Berth

The marina can accommodate yachts of up to 18m length, and drawing 3.5m.

Facilities

The marina has wireless internet access, and email for clients.

Page 369

The marina website is www.marina-koper.si

Page 372 Italy

In 2009 marina fees in Italy for a 10m yacht range from €27 per night to an incredible €60 (Marina Punta Faro), with an average of €40.

Page 385 Porto San Rocco

Facilities

The marina has free wireless internet access.

The marina website is www.portosanrocco.it

Page 387 Trieste

Berth

Currently Marina San Giusto can accommodate yachts of up to 24m, but in future it is planned to provide berths for yachts of up to 40m.

Page 392 Villaggio del Pescatore San Marco

Marina Lepanto

The marina website is www.marinalepanto.it

Page 394 Monfalcone

Facilities – Marina Hannibal

The marina has two travel lifts of 80-ton and 300-ton capacity, and a 160-ton slipway. There are also laundry facilities, diving centre and sailing school. Close to the marina is a sandy beach.

The marina can be contacted on VHF 9.

Page 395 Grado

Facilities

There is a fuel berth at Darsena San Marco, close to the E of the F.G. light.

Page 396

Darsena San Marco's website:

www.darsenasanmarco.it

Porto San Vito Marina's Email address is

Email info@portosanvito.com

Page 397 Porto Buso and

Cantieri Marina San Giorgio di Nogaro

Berth

Going up the river the first marina encountered to port is Marina Sant'Andrea, which can accommodate yachts up to 30m in length, and with a maximum draft of 5m. Marina San Giorgio, further upstream, can take vessels of up to 22m, and has the advantage of being closer to the town with its shops and restaurants.

Page 398 Facilities

Both marinas have the usual facilities, plus launderette, swimming pool, restaurant and bar. The Shipyard and Marina of Sant'Andrea can deal with super yachts of up to 100-ton, and has a 100-ton travel lift. Both marinas have a full range of servicing and repair facilities, and undercover workshops.

Contact details for Shipyard and Marina Sant'Andrea: Via E. Fermi, 330058 San Giorgio di Nogaro. ☎ (0431) 622162, (0431) 620461

Fax (0431) 621504

Email infor@marinasantandrea.it

www.marinasantandrea.it

Page 399 Lignano Sabbiadoro

Berth

Marina Punto Faro can accommodate yachts of up to 35m.

Page 400 Facilities – Marina Punto Faro

Facilities at the marina also include ice machines, launderette, chandlers, swimming pool, and wireless internet access.

The marina website is www.marinapuntafaro.it

Marano

The marina (which is a co-operative) has a new email address: Email portomaran@portomaran.com

www.portomaran.com

Page 401 Aprilia Marittima

Facilities

The fuel berth is open from 0830 to 1230, and from 1500 to 1830. Gas bottles can be refilled. Other facilities include ice machines, courtesy bus to the beach, and swimming pool.

Aprilia Marittima ☎ (0431) 53300

Fax (0431) 53143. www.apriliamarittima.com

Marina Capo Nord: www.marinacaponord.it

Page 402 Fiume Tagliamento

Berth

Marina Punta Verde can accommodate yachts of up to 20m.

Facilities – Marina Uno

The marina has a 20-ton crane, and a swimming pool. Website: www.marina-uno.com

Facilities – Marina Punta Verde

In addition to the usual facilities Marina Punta Verde has internet, wireless internet access, mini market, swimming pool and a 20-ton crane.



Address: Marina Punta Verde. Via. G Scerbanenco, 17/1, 33054 Lignano Sabbiadoro.
 ☎ (0431) 427131 Fax (0431) 427290

Email info@marinapuntaverde.it

www.marinapuntaverde.it

Page 403 Porto Santa Margherita

Berth

Both Marina 4 and Darsena dell'Orologio can take yachts of up to 25m.

Facilities

Darsena dell'Orologio has bicycles available for the use of boats in transit.

Marina 4: www.marina4.com

Darsena dell'Orologio:

Email info@darsenaorologio.com

www.darsenaorologio.com

Page 405 Porto di Cortellazzo

Facilities

Marina del Cavallino has wireless internet access and a swimming pool. Porto Turistico di Jesolo has a swimming pool, coin operated launderette, and a 50-ton travel lift.

Marina di Cortellazzo: www.marinadicortellazzo.it

Marina del Faro, Via Del Faro, Cavallino-Treporti (VE). ☎ (041) 968076 Fax (041) 537 0404.

Marina del Cavallino:

www.marinadelcavallino.com

Nautica Dal Vi Fax (0421) 188 024.

Porto Turistico di Jesolo: www.portoturistico.it

Page 415 Chioggia

Berth

Sporting Club Marina di Chioggia can accommodate yachts up to 35m in length, and up to 5m draft.

Darsena Mosella is part of the Hotel Mosella.

Facilities

Darsena Mosella Fax (041) 405 392

Email hotel-mosella@libero.it

Sporting Club Marina di Chioggia

Fax (041) 550 0655

Email info@darsenalesaline.com

www.darsenalesaline.com

Page 417 Porto Garibaldi

The marina address is Marina degli Estensi, Via Fortuna Maris, 44029 Lido degli Estensi (FE).

☎/Fax (0533) 328 428

Email info@portomarinaestensi.it

www.ilportomarinaestensi.it

Page 418 Porto Corsini

Marina Marinara www.marinara.it

Page 419 Cervia

The marina Email address is marinadicervia@tin.it

www.marinadicervia.it

Page 420 Cesenatico

Onda Marina's Email address is

ondamarina@tiscalinet.it

Page 421 Rimini

Berth

The marina can accommodate yachts of up to 45m and the shipyard next to it has a 100-ton travel lift. The marina has wireless internet access, and can supply ice.

Page 422 Cattolica

Yachts can berth at Cattolica either in the Nuova Darsena Mare, which is entered from the port canal and can take yachts of up to 30m, or in the basin beyond the footbridge. This basin has a few berths for yachts of up to 32m. Facilities for yachts include fuel, water, electricity, toilets and showers.

The marina contact details are Marina di Cattolica, Nuova Darsena Mare, 47841 Cattolica.

☎/Fax (0541) 830 789

Email info@marinadicattolica.it

www.marinadicattolica.it.

Page 423 Porto Baia Vallugola

Marina website: www.vallugola.com

Page 425 Fano

Before approaching and entering Fano you must contact the marina, either by VHF 08 or by phone ☎ (0721) 800 279), for details on where to berth. Vessels leaving the marina have priority over those wishing to enter. The marina has internet access for clients, and courtesy bicycles.

Page 429 Ancona

Berth

The marina can take yachts of up to 20m.

Page 431 Porto San Giorgio

The marina address: Marina di Porto San Giorgio, Via Gramsci Sud 485, 63017 Porto San Giorgio (AP). Telephone and email address as stated. www.marinaportosangiorgio.it

Page 432 San Benedetto del Tronto

The new yacht berths in the 'darsena turistica' are administered by the sailing club. Whereas the original berths can take yachts of up to 24m, the maximum length of yacht in the new part is 20m. The sailing club has toilets and showers. Fuel is available 24hrs a day.

The sailing club address is Circolo Nautico Sanbenedettese, Via Tamerici 3, San Benedetto del Tronto. ☎ (0735) 584 255 Fax (0735) 594 675

Email info@circolonautico.info

Page 433 Giulianova

Email info@enteportogiulianova.it

Page 434 Marina di Pescara

The marina can be contacted on VHF 06.

Marina di Pescara website: www.marinape.com

Page 435 Ortona

Marina di Ortona ☎ (085) 906 4432

Fax (085) 906 4792.

Page 437 Termoli

Marinucci Yachting has built a new marina, Marina San Pietro, to the S of Molo Sud, which is due to



open in July 2009. When it is fully operational it will have 250 berths, and ultimately will be able to accommodate yachts of up to 30m. The minimum depth in the marina will be 3.5m. There will be all the usual services as well as wireless internet access.

Marinucci Yachting *Fax* (0875) 702 238

Email mycangelo@myc.it www.myc.it

Page 441 Vieste

The various pontoons and yacht berths are held by different concessions. The maximum length of yacht that can be accommodated is 35m.

Page 447 Bisceglie

The marina can accommodate yachts of up to 25m. In total it has 500 berths. Depths at the berths range from 1m to 3.5m.

Marina contact details: Bisceglie Approdi, Via Trento N.48, casella postale n. 118, Bisceglie (BA).

☎/*Fax* (080) 395 4845

Email bisceglie.approdi@tiscali.it

www.bisceglieapprodi.it

Page 457 Brindisi

Berth

The marina can accommodate yachts of up to 50m.

Page 458 Santa Foca di Melendugno

The marina address is: Porto di San Foca, Lungomare Matteotti 6, San Foca di Melendugno (LE). ☎ (0832) 881 183 *Fax* (0832) 840 831

Email portodisanfoca@libero.it

Page 470 Useful addresses

Only corrections are given below. If, for example, a telephone number is not given below then the number in the *Adriatic Pilot* is still correct.

Albania

The international code for Albania is 355.

British Embassy: ☎ + 355 4 223 4973

Fax + 355 4 224 7697.

<http://ukinalbania.fco.gov.uk/en>

Austrian Embassy: Rr. Frederik Shiroka Nr. 3, Tirana. ☎ + 355 4 227 4855/4856

Fax + 355 4 233 140 *Email* tirana-ob@meia.gv.at

French Embassy: ☎ + 355 4 223 3750.

www.ambafrance-al.org

German Embassy: www.tirana.diplo.de

Italian Embassy: Rr.Papa Gjon Pall II, 2-Tirana, Albania. ☎ + 355 42 275 900

Fax + 355 42 250 921 www.ambtirana.esteri.it

Swiss Embassy: *Email* vertretung@tir.rep.admin.ch

United States Embassy: *Fax* + 355 4 232 222.

Montenegro

Delete entry for the British Consulate in Podgorica.

The British Embassy has a new address:

British Embassy, Ulcinjska 8, Gorica C, 81000 Podgorica, Montenegro. ☎ + 382 (20) 618 010

Fax +382 (20) 618 020

Email podgorica@britishembassy.co.me

<http://ukinmontenegro.fco.gov.uk/en>

Embassy of Montenegro in London, Trafalgar House, 11 Waterloo Place, London, SW1Y 4AU.

☎ 020 7863 8806 *Fax* 020 7863 8807.

Bosnia-Herzegovina

British Embassy: <http://ukinbih.fco.gov.uk/en>

Croatia

British Embassy: <http://ukincroatia.fco.gov.uk/en>

Delete: 'American Embassy, Andrija Hebranga 2-4, 10000 Zagreb, Croatia. ☎ + 385 1 4555 500'

Embassy of the Republic of Croatia to the USA: 2343 Massachusetts Avenue, N.W. Washington DC, 20008-2803. *Email* washton@mvpei.hr

Botschaft der Republik Kroatien in Berlin:

Email info@kroatische-botschaft.de <http://de.mfa.hr>

Botschaft der Republik Kroatien in Wien:

☎ + 43 (1) 485 9524. <http://at.mfa.hr>

Croatian Embassy to Italy: *Email* vrhrim@mvpei.hr <http://it.mvp.hr>

Croatian Embassy to France, 7 Square Thiers, 75116 Paris, France. (Same ☎ and *Fax* number and website).

Email redaction@amb-croatie.fr

Tourist information:

Italy: Ente Nazionale Croato per il Turismo:

Email info@enteturismocroato.it

Netherlands: *Email* kroatie-info@planet.nl

Slovenia

British Embassy: <http://ukinslovenia.fco.gov.uk/en>

Austrian Embassy in Slovenia:

Email laibach-ob@bmeia.gv.at

French Embassy in Slovenia:

Email ambafrance_si@siol.net

German Embassy in Slovenia:

☎ +386 (1) 479 03 00.

Email germanembassy-slovenia@siol.net

Italian Embassy in Slovenia:

Email archivio.lubiano@esteri.it

www.amblubiano.esteri.it

USA Embassy to Slovenia:

Email USEmbassyLjubljana@state.gov

Slovenian Embassy in London: ☎ 020 7227 9711

Tourist information:

Slovenian Tourist Office (in Ljubljana):

☎ + 386 (1) 589 18 40.

Italy

British Embassy: <http://ukinitaly.fco.gov.uk/en>

German Embassy in Rome:

Email info@rom.diplo.de www.rom.diplo.de

United States of America Embassy to Italy:

Email uscitizensrome@state.gov

<http://rome.usembassy.gov>



ADRIATIC PILOT Supplement No.1

June 2009

5th Edition 2008 978 085288 970 1

General

Registry of Shipping and Seamen, MCA, P.O. Box 165, Llanishen, Cardiff, CF14 5JA.

National Advice Service for Customs: ☎ 0845 010 9000.

Useful Web/Internet pages

For travel advice from the British Government:
www.fco.gov.uk

(Delete 'travel/countryadvice.asp')

Delete both entries for www2.tagish.co.uk

HM Revenue and Customs: www.hmrc.gov.uk and
<http://customs.hmrc.gov.uk> (for information on sailing your pleasure craft to and from the United Kingdom) HMRC Reference: Notice 8 (Dec. 2002)

Information on Italy, add www.marinas.it

Information on weather, add
www.eurometeo.com/english/home <http://meteo.hr>